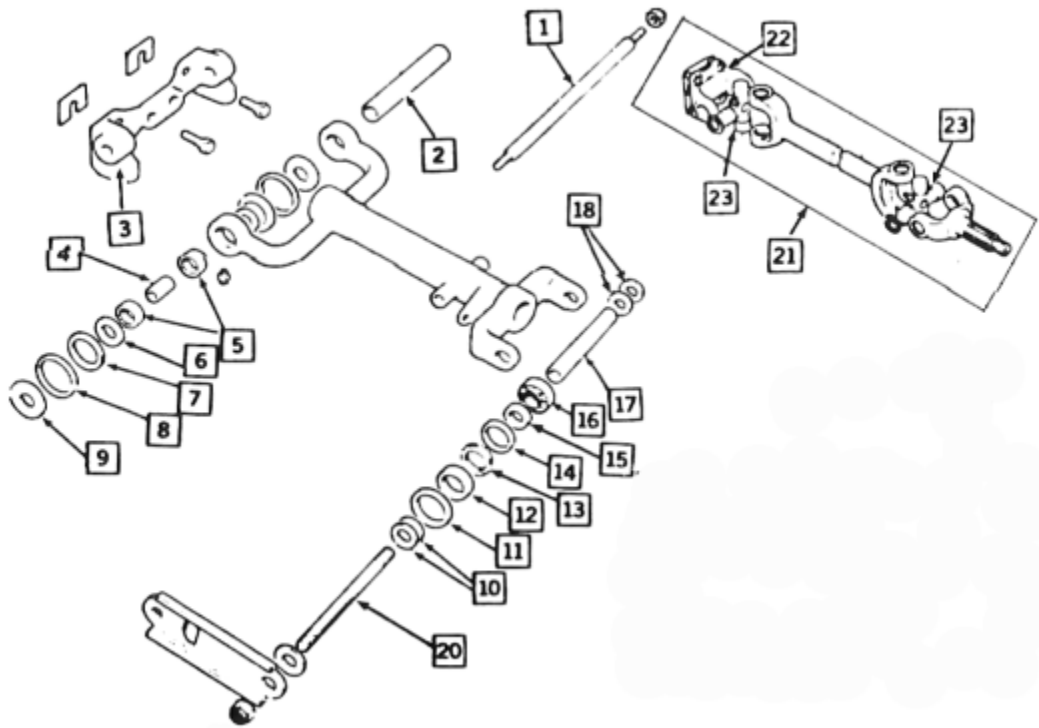


WISHBONE & MOUNTS

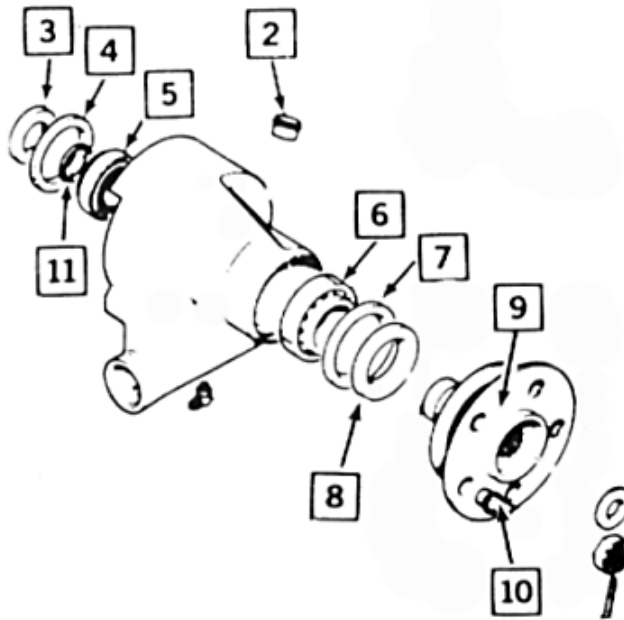
Jaguar Rear
Suspension
Parts



Ill. No.	Description	Qt. Rqd.	Jaguar Part	Aftermarket
1	Fulcrum shaft, Inner	2	C17008	None
2	Distance tube	2	C17663/1	None
3	Mounting bracket, inner	2	C21977	None
4	Bearing sleeve	4	C17168/1	ERA
5	Needle roller bearing	8	C17167	Tor B146
6	Thrust washer, inner (end of bearing tube)	8	C17166	None
7	Seal ring	8	C17213	None
8	Retainer, seal ring	8	C17936	None
9	Thrust washer, outer, on fulcrum shaft	8	C17165	None
10	Shim, outer hub .003" .007"	As rqd.	C16626/1 C16626/2	None
11	Retaining washer	4	C20182	None

12	Container for oil seal	12	C20179	See 13
13	Felt oil seal	4	C20178	National 471652 – replaces 11,12,13,14
14	Spacer	4	C20180	See 13
15	Seating ring, oil seal	4	C16628	See 13
16	Tapered roller bearing set	4	Timken 03062/03162	
17	Sleeve, outer fulcrum shaft	2	C16623/1	None
18	Shim, inner .003" .007"	As reqd.	C16626 C16626/3	None
20	Shaft, outer fulcrum, through 6/77 7/77-on	2	C16624 CAC2316	None

Rear Hub-carrier Parts



Ill. No.	Description	Qt. Rqd.	Jaguar Part	Aftermarket
2	Grease cap	2	C18124	None
3	Seal race, inner	2	C15232	None
4	Oil seal, inner	2	MNA749 (GHS154)	3" OD x 2.25" ID x .218"W
5	Bearing set, inner	2	C15230	Timken 18620/18690
6	Bearing set, outer	2	C196066	Timken 18520/18590
7	Seal, outer * There are two possibilities – this is the later (~ post '67) variation	2	GHS115	3.375" OD x 2.875" ID x .188"W
8	Seal race, outer	2	C24791	None
11	Shim, bearing/axle	As rqd.	CAC3818/10 to CAC3818/50 in .002" increments	Thickness=0.110" Thickness=0.150"

SOURCES FOR JAGUAR PARTS

Bill Tracy Jaguar Parts - Sarasota, FL - 941-924-9523
 Engel Imports - Kalamazoo, MI - 800-900-2905
 Terry's Jaguar Parts - Benton, IL - 618-439-4444
 Your local Jaguar dealer

REAR SUSPENSION

Part No.	Description	Plate No.	No. per Unit	Remarks
C.17014	REAR SUSPENSION CROSS MEMBER ASSEMBLY	30—1	1	
C.17198	RUBBER MOUNTING, FOR ATTACHMENT OF CROSS MEMBER TO BODY	30—2	4	
UFB.131/7R C.8667/2	Bolt, securing Rubber Mountings to Cross Member Nut, Self-Locking, on Bolts and on Studs of Rubber Mountings		8 10	
C.8737/2	Nut, Self-Locking, on Studs of Rubber Mountings		2	
FW.105/T	Washer, Plain, on Studs of Rubber Mountings		2	
UFB.131/24R C.8737/2	Bolt, securing Rubber Mountings to Body Nut, Self-Locking, on Bolts		8 8	
C.20481	MOUNTING, FOR INNER FULCRUM SHAFTS	30—3	2	
C.17009	Screw, Set (Long) securing Fulcrum Mountings to Final Drive Unit at rear		2	
C.17010	Screw, Set (Short) securing Fulcrum Mountings to Final Drive Unit at front		2	
C.17722	Shim (.005" thick) under Fulcrum Mountings, for Fulcrum Shaft Alignment	30—4	As req'd	} SELECTIVE SIZES
C.17723	Shim (.007" thick) under Fulcrum Mountings, for Fulcrum Shaft Alignment	30—4	As req'd	
C.837	Wire, locking Setscrews		As req'd	
C.20651	PLATE, BRACING LOWER FACE OF CROSS MEMBER AT CENTRE	30—5	1	
UFS.131/5R	Screw, Set, securing Plate to Cross Member and Fulcrum Shaft Mountings		14	
FG.105/X C.8737/2	Washer, Spring, at fixings to Fulcrum Shaft Mountings Nut, Self-Locking, at fixings to Cross Member		8 6	
C.20255	R.H. WISHBONE ASSEMBLY	30—6	1	
C.20256	L.H. WISHBONE ASSEMBLY		1	
C.17008	FULCRUM SHAFT, FOR INNER MOUNTING OF WISHBONES	30—7	2	
C.17663/1	Distance Tube, on Fulcrum Shafts	30—8	2	
C.17168/1	Bearing Tube, on Fulcrum Shafts	30—9	4	
C.17167	Needle Bearing, on Tubes, for Wishbones	30—10	8	
C.17166	Thrust Washer, inner, at each end of Bearing Tubes	30—11	8	
C.17213	Sealing Ring, on Inner Thrust Washers	30—12	8	
C.17936	Retainer, for Sealing Rings	30—13	8	
C.17165	Thrust Washer, outer, on Fulcrum Shafts	30—14	8	
C.8667/5	Nut, Self-Locking, on Fulcrum Shafts		4	
C.3044/1	Grease Nipple, for lubrication of Inner Fulcrum Shaft Bearings	30—15	4	

REAR SUSPENSION

Part No.	Description	Plate No.	No. per Unit	Remarks
C.16624	FULCRUM SHAFT, MOUNTING WISHBONES TO HUB CARRIERS	30-16	2	
C.16623	Sleeve, on Fulcrum Shafts	30-17	4	} SELECTIVE SIZES
C.16626	Shim (.004" thick) between Sleeves, adjusting Bearing End Float	30-18	As req'd	
C.16626/3	Shim (.007" thick) between Sleeves, adjusting Bearing End Float	30-18	As req'd	
C.16029	Bearing (Taper Roller) on Fulcrum Shafts (Timken 03062-03162)	30-19	4	
C.16628	Seating Ring, on Fulcrum Shafts, for Oil Seals	30-20	4	} SELECTIVE SIZES
C.20178	Oil Seal (Felt) on Fulcrum Shafts	30-21	4	
C.20179	Container, for Oil Seals	30-22	4	
C.20180	Spacer, between Bearings and Oil Seal Containers	30-23	4	
C.20182	Retaining Washer, on Seating Rings, for Oil Seals	30-24	4	
C.16626/1	Shim (.003" thick) on Fulcrum Shafts, for centralisation of Hub Carriers in Wishbone Forks	30-25	As req'd	
C.16626/2	Shim (.007" thick) on Fulcrum Shafts, for centralisation of Hub Carriers in Wishbone Forks	30-25	As req'd	
C.8667/7	Nut, Self-Locking, on Fulcrum Shafts	30-26	4	
C.26701	HUB CARRIER	30-27	2	
C.9048	Grease Nipple, in Carriers, for lubrication of Fulcrum Shaft Bearings	30-28	2	
C.18124	Grease Retaining Cap, at top of Hub Carriers	30-29	2	
C.20889	R.H. REAR HUB ASSEMBLY	30-30	1	
C.20813	Water Thrower, on Rear Hub		1	
C.20890	L.H. REAR HUB ASSEMBLY		1	
C.20813	Water Thrower, on Rear Hub		1	
C.1102	R.H. HUB CAP	30-31	1	} NOT REQUIRED FOR CARS EXPORTED TO GERMANY, JAPAN, OR SWITZERLAND
C.1103	L.H. HUB CAP		1	
C.14891	R.H. HUB CAP		1	} REQUIRED FOR CARS EXPORTED TO GERMANY, JAPAN, OR SWITZERLAND
C.14892	L.H. HUB CAP		1	
C.14927	TOOL FOR REMOVING AND FITTING HUB CAPS		1	
C.24789	OIL SEAL (OUTER) FOR HUBS	30-32	2	
C.24791	Seating Ring, on Hubs, for Outer Oil Seal	30-33	2	

REAR SUSPENSION

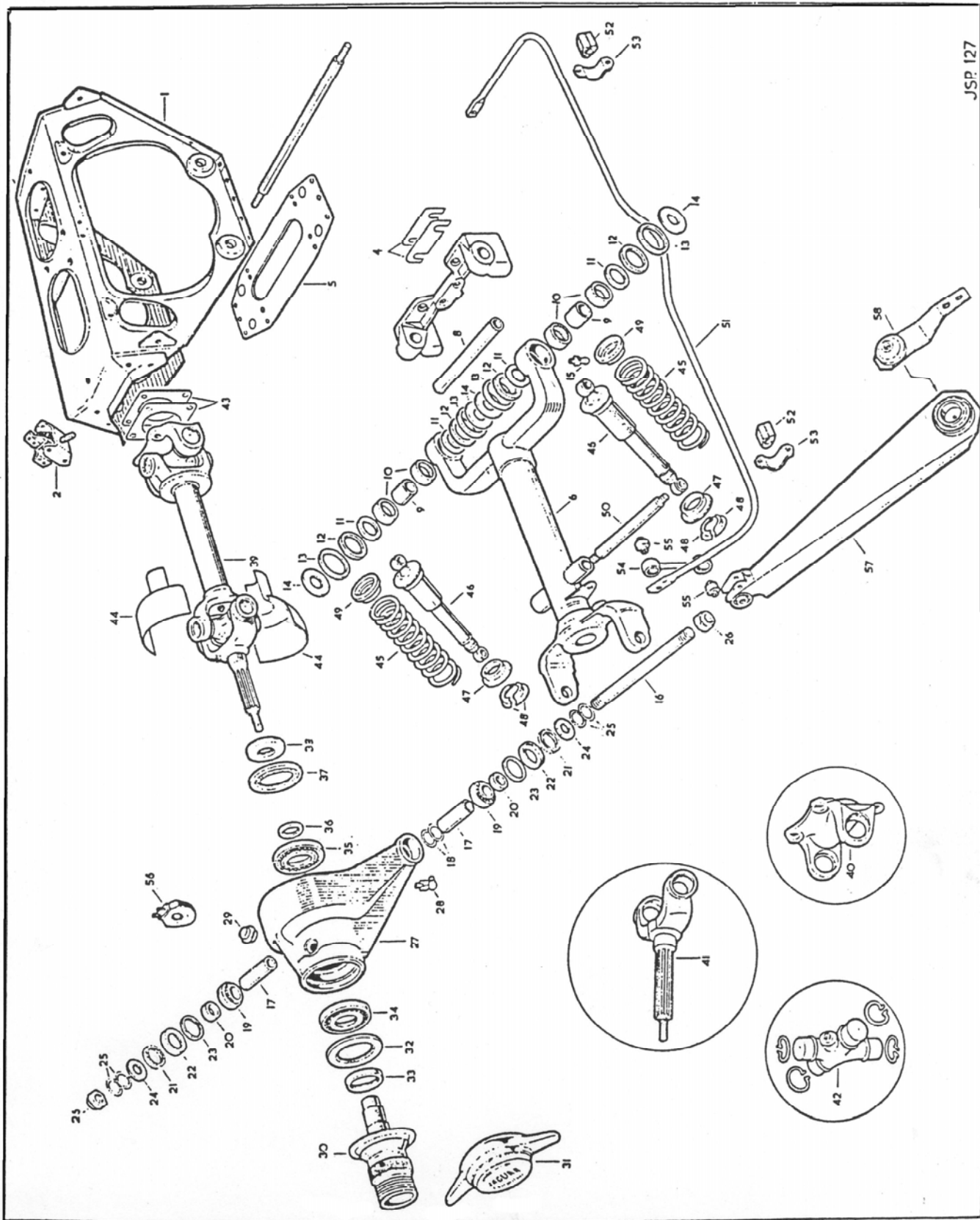
Part No.	Description	Plate No.	No. per Unit	Remarks
C.19066	OUTER BEARING (TAPER ROLLER) FOR HUBS (TIMKEN 18690-18620)	30—34	2	
C.15230	INNER BEARING (TAPER ROLLER) FOR HUBS (TIMKEN 18590-18520)	30—35	2	
C.19110/A	Spacer (.109" thick) on Half-Shaft Splined Yoke, for Hub Bearing Adjustment	30—36	2	} SELECTIVE SIZES
C.19110/B	Spacer (.112" thick) on Half-Shaft Splined Yoke, for Hub Bearing Adjustment	30—36	2	
C.19110/C	Spacer (.115" thick) on Half-Shaft Splined Yoke, for Hub Bearing Adjustment	30—36	2	
C.19110/D	Spacer (.118" thick) on Half-Shaft Splined Yoke, for Hub Bearing Adjustment	30—36	2	
C.19110/E	Spacer (.121" thick) on Half-Shaft Splined Yoke, for Hub Bearing Adjustment	30—36	2	
C.19110/F	Spacer (.124" thick) on Half-Shaft Splined Yoke, for Hub Bearing Adjustment	30—36	2	
C.19110/G	Spacer (.127" thick) on Half-Shaft Splined Yoke, for Hub Bearing Adjustment	30—36	2	
C.19110/H	Spacer (.130" thick) on Half-Shaft Splined Yoke, for Hub Bearing Adjustment	30—36	2	
C.19110/J	Spacer (.133" thick) on Half-Shaft Splined Yoke, for Hub Bearing Adjustment	30—36	2	
C.19110/K	Spacer (.136" thick) on Half-Shaft Splined Yoke, for Hub Bearing Adjustment	30—36	2	
C.19110/L	Spacer (.139" thick) on Half-Shaft Splined Yoke, for Hub Bearing Adjustment	30—36	2	
C.19110/M	Spacer (.142" thick) on Half-Shaft Splined Yoke, for Hub Bearing Adjustment	30—36	2	
C.19110/P	Spacer (.145" thick) on Half-Shaft Splined Yoke, for Hub Bearing Adjustment	30—36	2	
C.19110/Q	Spacer (.148" thick) on Half-Shaft Splined Yoke, for Hub Bearing Adjustment	30—36	2	
C.19110/R	Spacer (.151" thick) on Half-Shaft Splined Yoke, for Hub Bearing Adjustment	30—36	2	
C.15231	OIL SEAL (INNER) FOR HUBS	30—37	2	
C.15232	Seating Ring, for Inner Oil Seal, on Splined Yoke, behind adjustment Spacer	30—38	2	
C.23655/2	HALF SHAFT ASSEMBLY (05/501505)	30—39	2	
9406	Flange Yoke (05/202034)	30—40	2	
9407	Splined Yoke (05/221027)	30—41	2	
10420	Journal Assembly, connecting Yokes to Half Shaft (05/501471)	30—42	4	
10421	Circlip, retaining Needle Bearings (05/245032)		16	
C.16621	Shim, behind Flange Yokes, for adjustment of Rear Wheel Camber Angle	30—43	As req'd	
C.15349	Nut, Self-Locking, securing Flange Yoke and Brake Disc to Final Drive Unit Flanges		8	
UFN.375/L	Slotted Nut, securing Splined Yoke in Hubs		2	
C.24923	Washer, Plain, under Slotted Nuts		2	
L.105/13U	Split Pin, retaining Slotted Nuts		2	

REAR SUSPENSION

Part No.	Description	Plate No.	No. per Unit	Remarks
C.23616	JOINT COVER PROTECTING OUTER JOURNAL ASSEMBLIES	30—44	4	
BD.1814/4 C.2905/12	Pop Rivet, securing Joint Covers together Clip, securing Joint Covers to Half Shafts		8 2	
C.25939	REAR SUSPENSION COIL SPRING	30—45	4	
C.25951	REAR SHOCK ABSORBER (NAP.64054299E)	30—46	4	
8688 8609	Dust Shield Assembly (64541630) Bush (Rubber) in eyes of Shock Absorbers (64541636)		4 8	
C.19820 8687 C.19027 UFB.143/16R FW.107/T C.17012 C.17013 C.3052 C.8737/4	Seat, for Rear Suspension Coil Springs (64541629) Retainer, for Rear Suspension Coil Springs (64540894) Packing Ring, at top of Rear Suspension Coil Springs Bolt, securing Shock Absorbers at top to Rear Suspension Cross Member Washer, Plain on Bolts Sleeve, on Bolts Mounting Shaft, for lower fixing of Shock Absorbers Washer, Plain, on Mounting Shafts Nut, Self-Locking, on Bolts and Mounting Shafts	30—47 30—48 30—49 30—50	4 8 4 4 4 4 2 4 8	
C.25747	REAR ANTI-ROLL BAR	30—51	1	
C.25748 C.3054 UFS.137/7R C.726	Bush (Rubber) for Anti-Roll Bar Bracket, holding Rubber Bushes Screw, Set, securing Brackets to Body Washer, Shakeproof, on Setscrews	30—52 30—53	2 2 4 4	
C.20765	LINK BETWEEN ANTI-ROLL BAR AND RADIUS ARMS	30—54	2	
C.10940 C.18296 UFB.143/15R C.8667/4 FW.107/T	Bush (Rubber) in each end of Links Bolt, Special, securing Links to Anti-Roll Bar Bolt, securing Links to Radius Arms Nut, Self-Locking, on Bolts Washer, Plain, under Nuts	30—55	4 2 2 4 4	
C.25938	BUMP STOP ON BODY UNDERFRAME	30—56	2	
C.8737/2 FW.105/T	Nut, Self-Locking, securing Bump Stops Washer, Plain, under Nuts		4 4	
C.23824	RADIUS ARM ASSEMBLY	30—57	2	
C.23782 C.17146	Bush (Rubber) at front end of Radius Arms Bush (Rubber) at rear end of Radius Arms		2 2	
C.17149/1 C.8737/5	Bolt, Special, securing Radius Arms to Wishbones Nut, Self-Locking, on Bolts		2 2	

REAR SUSPENSION

Part No.	Description	Plate No.	No. per Unit	Remarks
C.25156	SAFETY STRAP ASSEMBLY, AT MOUNTING OF RADIUS ARMS TO BODY	30—58	2	FOR USE WITH $\frac{7}{16}$" DIAMETER BOLTS
C.19045 C.837	Bolt, Special, securing Radius Arms to Body Lockwire, for Bolts		2 As req'd	} FOR USE ONLY WITH SAFETY STRAP C.25156
C.25156/1	SAFETY STRAP ASSEMBLY, AT MOUNTING OF RADIUS ARMS TO BODY		2	FOR USE WITH $\frac{1}{2}$" DIAMETER BOLTS
C.24225 C.837	Bolt, Special, securing Radius Arms to Body Lockwire, for Bolts		2 As req'd	} FOR USE WITH SAFETY STRAP C.25156/1
UFS.131/6R C.8667/2	Screw, Set, securing Safety Straps to Body Nut, Self-Locking, on Setscrews		4 4	



JSP 127

PLATE 30

HANDBRAKE LINKAGE

JSP152

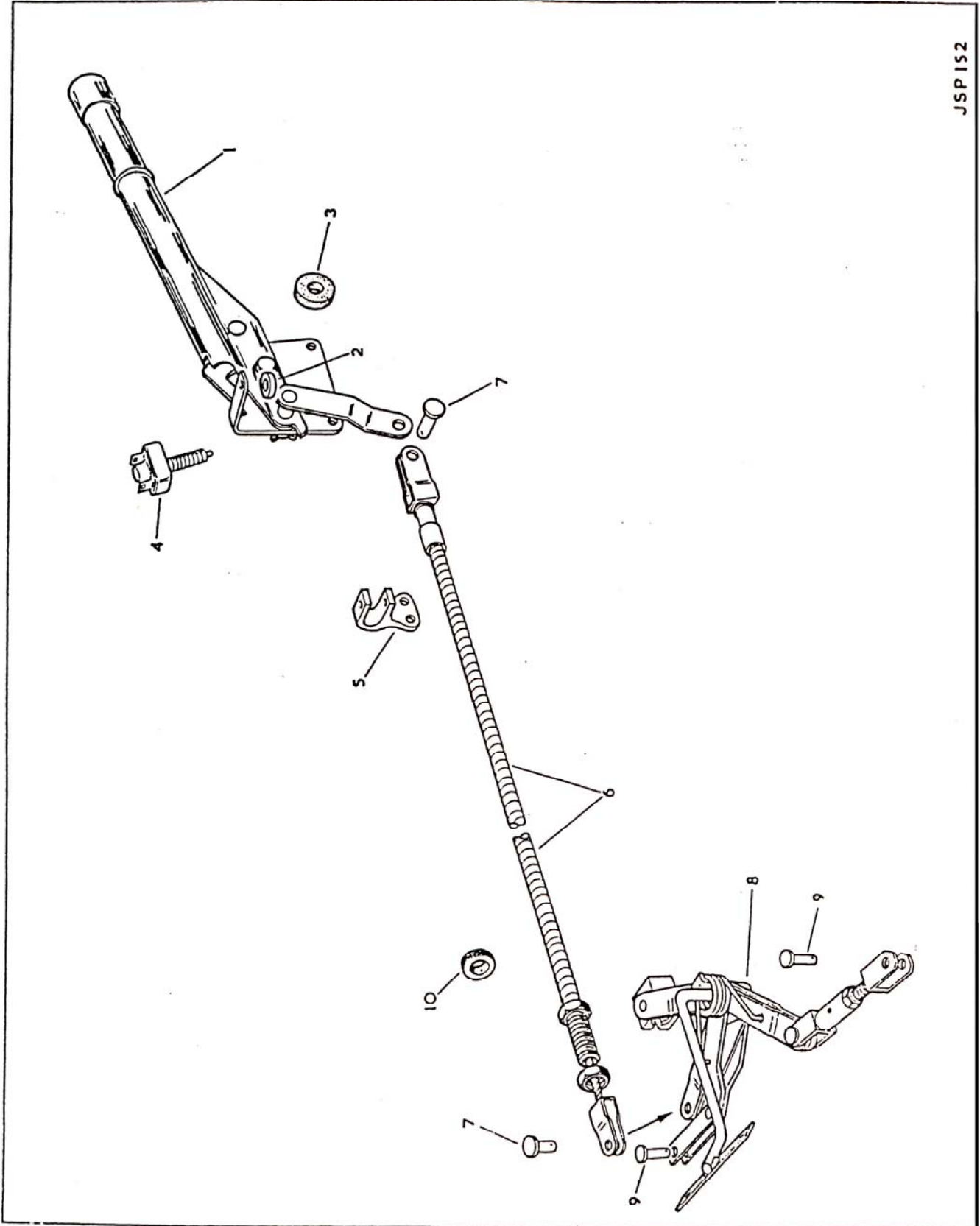


PLATE 39

REAR BRAKES

Part No.	Description	Plate No.	No. per Unit	Remarks
C.21220	R.H. REAR CALIPER ASSEMBLY (VB.1285A/V)		1	
9074	R.H. Rear Caliper only (VBM.1079)	32-1	1	SET OF FOUR PADS
10873	Friction Pad Kit (VBO.8328/1/V)	32-2	1	
7718	Support Plate, for Friction Pads (VBO.5133)	32-3	2	
9068	Retaining Plate, for Friction Pads (VBO.5125)	32-4	1	
UFB.125/7R	Bolt, securing Retaining Plate (VBO.6002)	32-5	1	
UFN.125/L	Nut, on Bolt (VBO.6053)	32-6	1	
C.724	Washer, Shakeproof, under Nut (VBO.6101)	32-7	1	
8778	Piston and Cylinder Assembly (VBO.5506)	32-8	2	
7720	Bolt, securing Cylinders to Caliper (VBO.5100)	32-9	8	
C.724	Washer, Shakeproof, on Bolts (VBO.6101)	32-10	8	
6911	Bleed Screw and Ball Assembly (VBO.8378)	32-11	1	
7826	Bridge Pipe Assembly (VBO.3588)	32-12	1	
C.21221	L.H. REAR CALIPER ASSEMBLY (VB.1285B/V)		1	
9075	L.H. Rear Caliper only (VBM.1078)		1	
7827	Bridge Pipe Assembly (VBO.3589)		1	
	All other items are as for R.H. Rear Caliper C.21220			
C.13198	Shim (.005" thick) for adjustment of Rear Brake Calipers	32-13	As req'd	} SELECTIVE SIZES
C.13199	Shim (.020" thick) for adjustment of Rear Brake Calipers	32-13	As req'd	
C.20440	Screw, Set, securing Rear Calipers to Adaptor Plates	32-14	4	
FG.107/X	Washer, Spring, on Setscrews	32-15	4	
C.21126	Wire (Stainless) locking Setscrews		As req'd	
C.22859	ADAPTOR PLATE FOR REAR CALIPERS	32-16	2	
10510	REPAIR KIT FOR REAR BRAKE CYLINDERS (VBO.8211/A)		4	
	(COMPRISING PISTON SEAL AND DUST SEAL)			
7840	PISTON RETRACTION TOOL (AO.103741)		1	FOR USE WHEN RENEWING FRICTION PADS

REAR BRAKES

Part No.	Description	Plate No.	No. per Unit	Remarks
C.20550	R.H. HANDBRAKE MECHANISM ASSEMBLY (VBM.4243/A)	32—17	1	
9326	R.H. Inner Pad Carrier Assembly (VBM.4647/A)	32—18	1	
9328	R.H. Outer Pad Carrier Assembly (VBO.8235/A)	32—19	1	
8938	Anchor Pin, on Inner Pad Carrier, retaining Return Spring (VBO.8157)	32—20	1	
9330	Operating Lever Assembly (VBO.8379)	32—21	1	
8940	Return Spring, between Operating Lever and Anchor Pin (VBO.8190)	32—22	1	
8836	Pawl Assembly (VBO.7995)	32—23	1	
8837	Tension Spring, for Pawl (VBO.7367)	32—24	1	
8838	Anchor Pin, retaining Tension Spring (VBO.7385)	32—25	1	
8980	Adjusting Nut (VBO.7667)	32—26	1	
8840	Friction Spring, on Adjusting Nut (VBO.7588)	32—27	1	
8841	Hinge Pin, securing Operating Lever (VBO.7289)	32—28	1	
L.102/4U	Split Pin, retaining Hinge Pin	32—29	1	
9334	Protection Cover Assembly, at rear of Operating Lever (VBO.8467)	32—30	1	
9335	Protection Cover, at front of Operating Lever (VBO.8215)	32—31	1	
9336	Bolt, securing Protection Covers (VBO.6015/G)	32—32	1	
BD.29063	Washer, Countersunk Shakeproof, on Bolt (VBO.6100/D)	32—33	1	
9749	Bolt, securing Pad Carriers to Operating Lever (VBO.8805)	32—34	1	
L.102.5/8U	Split Pin, retaining Bolt	32—35	1	
C.20547	L.H. HANDBRAKE MECHANISM ASSEMBLY (VBM.4244/B)		1	
9327	L.H. Inner Pad Carrier Assembly (VBM.4647/B)		1	
9329	L.H. Outer Pad Carrier Assembly (VBO.8235/B)		1	
	All other items are as for Handbrake Mechanism C.20550			
8016	Bolt, securing Handbrake Mechanisms to Rear Calipers (VBO.4190)	32—36	4	
9750	Retraction Plate, on Bolts (VBO.4646/2)	32—37	2	
9751	Tab Washer, locking Bolts (VBO.4225)	32—38	2	
10531	REPAIR KIT FOR HANDBRAKE MECHANISM (VBO.9418/R) (COMPRISING FOUR FRICTION PADS, FIXING BOLTS, NUTS, AND WASHERS)		1	
C.20326	DISC, FOR REAR BRAKE CALIPERS	32—39	2	

REAR BRAKES

JSP 129

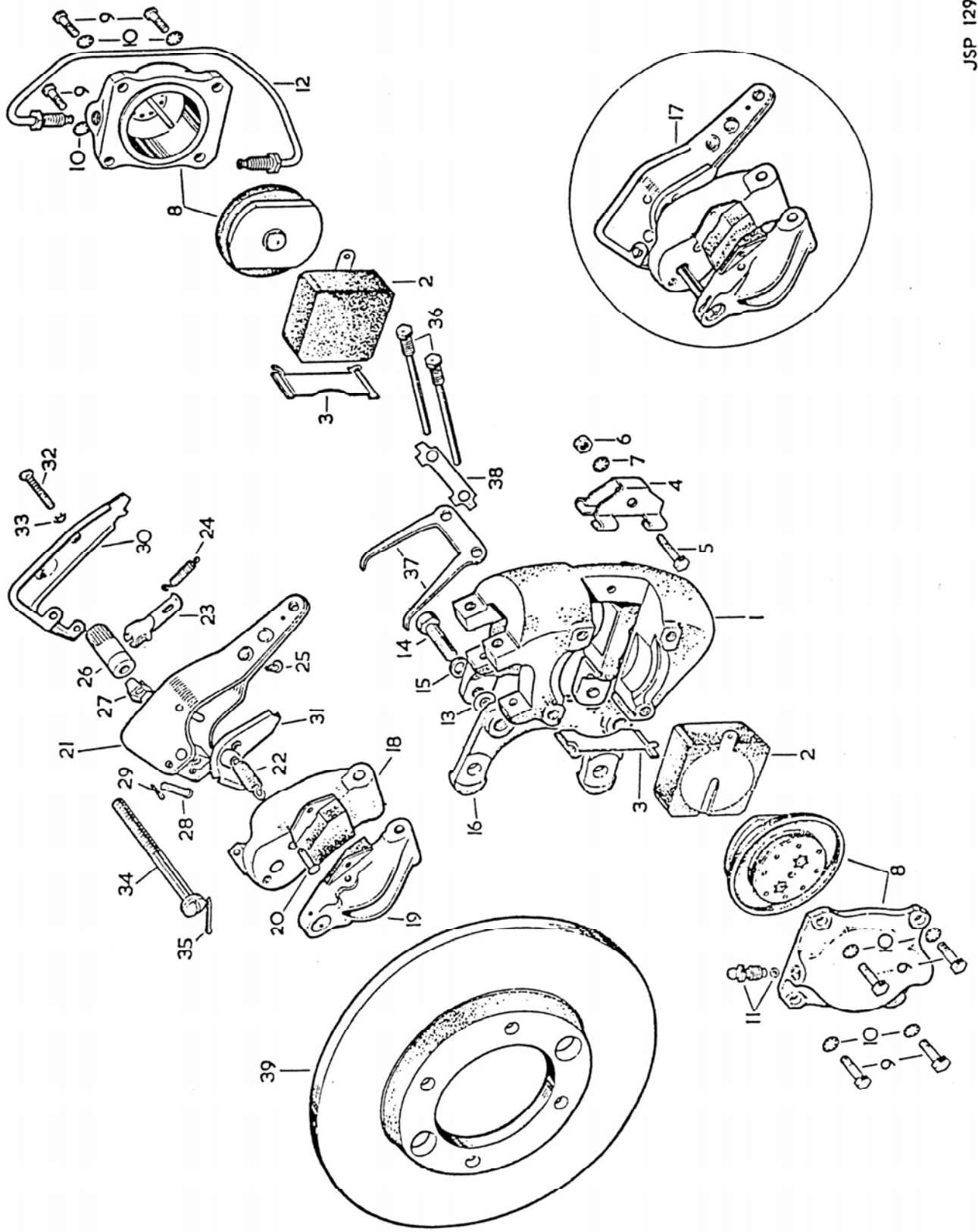


PLATE 32

HANDBRAKE CONTROL

Part No.	Description	Plate No.	No. per Unit	Remarks
C.25579	HANDBRAKE LEVER ASSEMBLY	39-1	1	
UFS.131/5R	Screw, Set, securing Handbrake Lever to Propeller Shaft Tunnel at side		2	
UFS.131/6R	Screw, Set, securing Handbrake Lever to Propeller Shaft Tunnel at top		1	
C.19706	Spacer, on top Setscrew	39-2	1	
FG.105/X	Washer, Spring, on Setscrews		3	
C.25335	Sealing Ring (Rubber) between Handbrake Lever and Propeller Shaft Tunnel	39-3	1	
C.16660	SWITCH, OPERATING HANDBRAKE WARNING LAMP (31893/A-12.SA)	39-4	1	} See also Electrical Equipment
UFN.125/L	Nut, securing Switch to Bracket on Propeller Shaft Tunnel		2	
C.23096	ABUTMENT BRACKET, HOLDING FORWARD END OF HANDBRAKE OUTER CABLE	39-5	1	
UFS.131/7R	Screw, Set, securing Bracket to Propeller Shaft Tunnel		2	
FG.105/X	Washer, Spring, on Setscrews		2	
C.25448	HANDBRAKE CABLE ASSEMBLY	39-6	1	
UFS.125/8R	Screw, Set, securing Outer Cable in Abutment Bracket		1	
FG.104/X	Washer, Spring, on Setscrew		1	
J.105/9S	Clevis Pin, securing Inner Cable to Lever and Compensator	39-7	2	
L.103/7U	Split Pin, retaining Clevis Pins		2	
FWY.105/T	Washer, Plain, behind Split Pins		2	
C.22955	HANDBRAKE COMPENSATOR ASSEMBLY, COMPLETE	39-8	1	
C.20403	Outer Lever Assembly, complete with Link and Abutment Block		1	
C.18384	Inner Lever Assembly		1	
C.22953	Fork End, inner, connecting Compensator to R.H. Handbrake Mechanism		1	
J.105/10S	Clevis Pin, retaining Fork End to Inner Lever		1	
L.103/7U	Split Pin, retaining Clevis Pin		1	
FW.105/T	Washer, Plain, behind Split Pin		1	
C.22954	Fork End, outer, connecting Compensator to R.H. Handbrake Mechanism		1	
UFN.225/L	Nut, locking Fork Ends together		1	
C.18387	Return Spring, for Compensator Levers		1	
C.20406	Pivot Bracket Assembly, mounting Compensator		1	
L.103/7U	Split Pin, retaining Compensator Levers and Spring on Spring Bracket		1	
FW.106/T	Washer, Plain, behind Split Pin		1	
C.18414	Washer, Corrugated, behind Split Pin		1	
UFS.131/5R	Screw, Set, securing Pivot Bracket to Rear Suspension Cross Member		2	
FG.105/X	Washer, Spring, on Setscrews		2	
J.105/10S	Clevis Pin, retaining Fork End and Link to Handbrake Mechanisms	39-9	2	
L.103/7U	Split Pin, retaining Clevis Pins		2	
FWY.105/T	Washer, Plain, on Clevis Pin retaining Link		1	
C.4548	GROMMET, IN CABLE SUPPORT BRACKET AT REAR OF BODY	39-10	1	