

## Updating the brake light switch

If you have a switch in each master cylinder, you only need to replace **one** switch. Do not remove the second switch!

**Note** that if you have a dash warning light for brake function, it will no longer work.

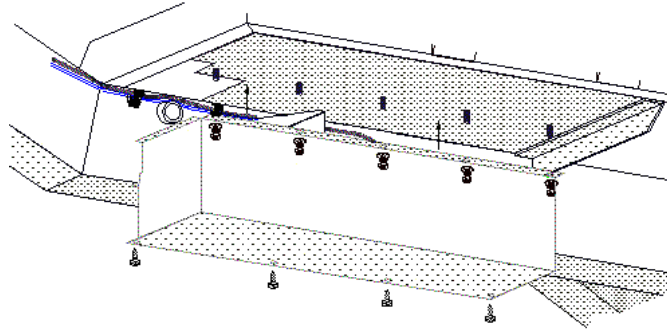
<b>Parts included:</b>	<ul style="list-style-type: none"><li>• Brake switch</li><li>• ¼" electrical (male) tabs</li></ul>	<ul style="list-style-type: none"><li>• Shrink tubing</li><li>• Female push-on connectors</li></ul>
------------------------	--	---

### To replace:

Remove the brake master cylinder cover.

Remove the electrical plugs at the rear end of the cylinders.

If you have a switch in each master cylinder, you only need to replace **the outside** switch. Do not remove the second switch!



Have the new switch ready to install, with a small amount of low-strength sealer like blue Loctite.

If you have a switch in both master cylinders, remove the outside switch with a socket or box wrench. Quickly replace it with the new switch – but don't tighten it fully.

Let fluid seep from the loose connection for the time necessary for 20 or so drops to leak. If you have a helper, have them push on the pedal lightly.

Tighten the new switch to 12 lbft. Don't press on the brake pedal for at least one hour.

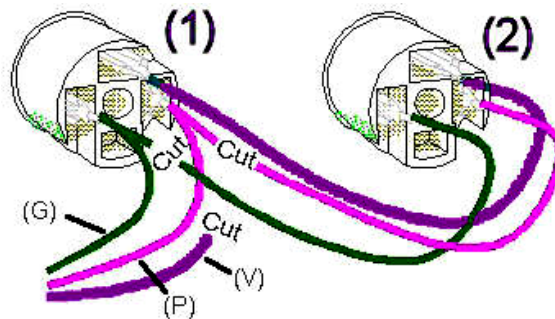
Dry the threads around the switch.

If you have two brake switch sockets, cut the three wires as shown at the right. Both the old sockets will eventually be discarded after the wires are removed as described below.

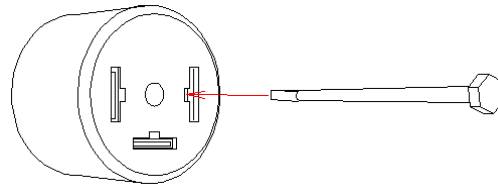
Tape the violet wire completely where it comes out of the harness.

Trim the "stubs" of the other two wires close to where they join together.

You will end up using only the green and pink wires of connector (1).



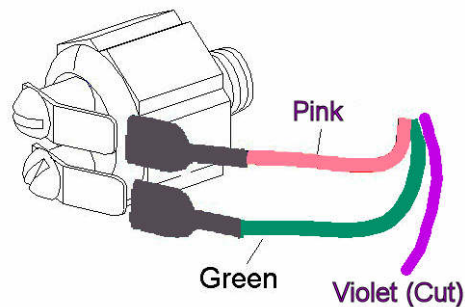
Use a small jeweler's screwdriver to remove the green and pink wire terminals from the remaining socket. Push the flat blade into the small slot adjacent to the blade. It will flatten a retaining tab so that the terminal can be removed. Alternately, if you have a good crimper, you can cut the wires and put on a new terminal end included with the update kit.



Cover the bare female terminals with the included shrink tubing and shrink with a heat gun or match.

Attach the male tabs to the switch posts with the screws included.

Connect the wires as shown (although they can be reversed without a problem). Tape off the violet wires.



Press hard on the brake pedal and check for leaks at the threads.

Replace the brake cover.